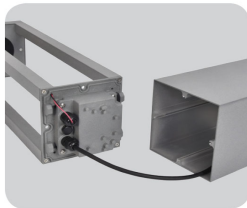
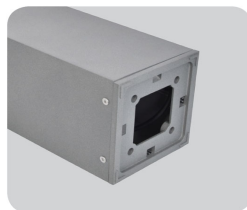


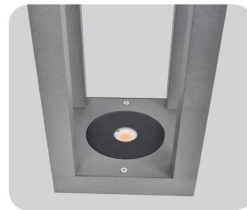
Heatsink part



Detachable



Die casting base



COB options

Application

Bollard lights are a type of lighting fixture that is commonly used to illuminate pathways and landscapes for pedestrian use and safety. These pathway lights are typically round or square post style fixtures that project light horizontally and/or downward to provide necessary lighting for walkways.

Product Specification

Model	BL-4276-0.8M
Power	20W
LED Type	lumileds 2835
Driver	OSRAM
Luminous lux	1600lm
CCT	3000K/4000K/6500K
CRI	>80
Beam angle	300°
Input Voltage	AC220-240V/50-60Hz
IP rating	IP65
Dimension (mm)	150*150*H800mm
Cut out (mm)	N/A
Life Time	50000H
Working Temp	-20°C ~ +50°C
Housing material	Aluminium
Diffuser	Tempered glass
Finishing	Black/Dark Grey/Light Grey
Cable	Open wires

Options

Dimmable	N/A
Emergency	N/A

Accessories

Screw	YES
Embedded part	N/A
Water stopper	N/A
Honeycomb cover	N/A